

WELCOME

Your  
AustralianSuper  
experience  
starts here



# WELCOME TO AUSTRALIANSUPER

1

## Welcome

As a new member you'll receive a welcome pack about your account. This usually happens after your employer pays your first contribution.

2

## Register your account online

Go to [australiansuper.com/login](https://australiansuper.com/login)

3

## Download the mobile app

Track your super while you're on the go.



7

## Consolidate your super

You may be able to save time and turn multiple accounts into one! Go to [australiansuper.com/combine](https://australiansuper.com/combine)

6

## Insurance cover

Protect yourself and those who matter to you with insurance. Check you have enough cover.

5

## Investment options

You can stay invested in the default MySuper Balanced option, like 90% of members\*, or you can make your own investment choice.

4

## Nominate your beneficiaries

Your super savings may last 20 years or more when you retire – some of the savings may even outlive you, so it's important to let us know where you want your money to go.

8

## Add more money to your account

Pick the option that works best for you‡ before tax or after tax.

9

## Changing jobs

No problem, your account can move with you. Just give your AustralianSuper details to your new employer.

10

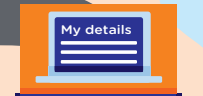
## Keep your details updated

We'll be able to stay in touch when there's something you need to know about your account.

11

## Ready to retire

Stay with us and turn your super into a regular income by opening a Choice Income account.



\* As at 30 September 2021.

† Before combining your super, ask your other super provider about any fees or charges that may apply, and other information about the effect this transfer may have on your benefits, such as insurance cover.

‡ Before adding to your super, consider your financial circumstances, contribution caps that may apply, and tax issues. Salary sacrifice may affect some Government benefits and employee benefits. Consider getting financial advice before deciding what's right for you.

We have many options to help you save for the future.

Find out more:

Call

**1300 300 273**

8am-8pm AEST/AEDT weekdays

Visit

**australiansuper.com**

This brochure has been prepared and issued in November 2021 and is subject to change. This may include general financial advice which doesn't take into account your personal objectives, financial situation or needs. Before making a decision consider if the information is right for you and read the relevant Product Disclosure Statement, available at [australiansuper.com/pds](https://australiansuper.com/pds) or by calling **1300 300 273**. A Target Market Determination (TMD) is a document that outlines the target market a product has been designed for. Find the TMDs at [australiansuper.com/tmd](https://australiansuper.com/tmd)

AustralianSuper Pty Ltd ABN 94 006 457 987, AFSL 233788,  
Trustee of AustralianSuper ABN 65 714 394 898

Apple and the Apple logo are trademarks of Apple Inc., registered in the U.S. and other countries. App store is a service mark of Apple Inc.

Google Play and the Google Play logo are trademarks of Google Inc.

